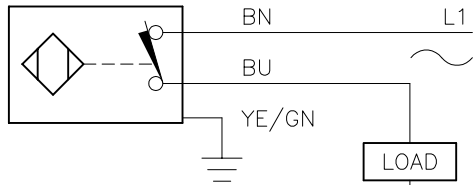


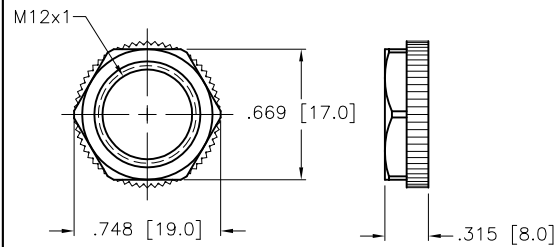
WIRING DIAGRAM

LOCKNUT LN-P12

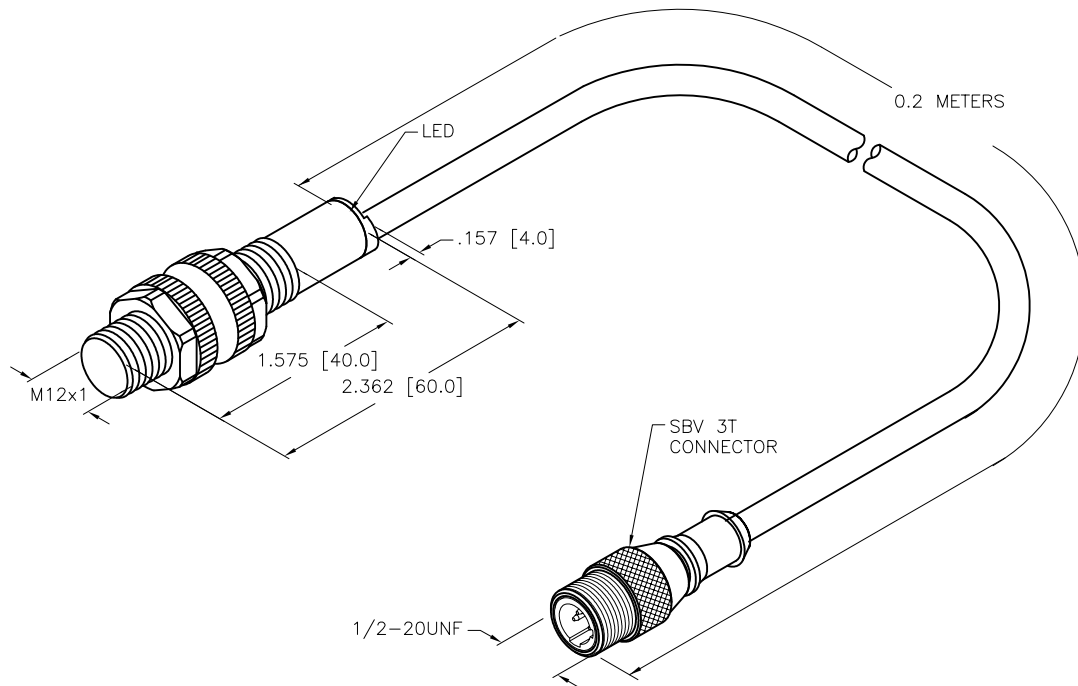
SPECIFICATIONS



OUTPUT: RDZ32X



RATED OPERATING DISTANCE	4mm = .157"
MOUNTING MODE	FLUSH
TEMPERATURE DRIFT	≤±10%
HYSTERESIS	3–15%
MIN. REPEAT ACCURACY	≤2%
OPERATING TEMPERATURE	–25°C to +70°C (–13°F to +158°F)
RATED OPERATIONAL VOLTAGE	20–250 VAC/10–300 VDC
RESIDUAL RIPPLE	≤10%
RATED OPERATIONAL CURRENT	≤100 mA
RESIDUAL CURRENT	≤1.7 mA
RATED INSULATION VOLTAGE	≤0.5 kV
SHORT-CIRCUIT PROTECTION	YES
MAX. VOLTAGE DROP	≤6 V
MIN. OPERATIONAL CURRENT	≥3 mA
LINE FREQUENCY	40–60 Hz
MAX. SWITCHING FREQUENCY	≤0.6 kHz
OUTPUT FUNCTION	2-WIRE, NORMALLY CLOSED, SELF CONTAINED
HOUSING MATERIAL	PLASTIC, PA12–GF30
ACTIVE FACE MATERIAL	PLASTIC, PA12–GF30
CABLE	PVC
VIBRATION RESISTANCE	55 Hz (IN ALL 3 PLANES)
SHOCK RESISTANCE	30 g, 11 ms
DEGREE OF PROTECTION	IP 67
SWITCHING STATUS INDICATION	LED, YELLOW



SOURCE DRAWING - FOR REFERENCE ONLY

NOTES:

1. "/S1023" DESIGNATES WET/WASHDOWN APPLICATIONS. LENSED LEDS AND SERPENTINE FULLY POTTED INTERNAL CABLE.

RELATED DOCUMENTS		3RD ANGLE PROJECTION		<div>THIS DRAWING IS CONFIDENTIAL AND THE PROPERTY OF TURCK INC. USE OF THIS DOCUMENT WITHOUT WRITTEN PERMISSION IS PROHIBITED.</div> <div>TURCK</div> <div>3000 CAMPUS DRIVE MINNEAPOLIS, MN 55441 1-800-544-7769 (763) 553-7300 (763) 553-0708 fax www.turck.us</div>	
1. 2. 3. 4.					
MATERIAL SEE SPECS		DRFT RDS	DATE 10/25/05	DESCRIPTION BI4-S12-RDZ32X-0.2M-SBV3T/S1023	
FINISH		APVD BT	SCALE 1=1.3		
		UNIT OF MEASUREMENT INCH [MILLIMETER]		IDENTIFICATION NO. 4205085	REV B
		DO NOT SCALE THIS DRAWING		FILE: 4205085	SHEET 1 OF 1
ALL DIMENSIONS DISPLAYED ON THIS DRAWING ARE FOR REFERENCE ONLY		CONTACT TURCK FOR MORE INFORMATION			

B	UPDATE ID NUMBER PER HARMONIZATION PROJECT	CBM	11/06/17	
REV	DESCRIPTION	BY	DATE	ECO. NO.